

ScandAll PRO

Scan to Microsoft SharePoint update history

Update Pack1 (V3.3.4000)

"Update Pack1" is intended to correct a malfunction, which affected Windows® operating systems that had been updated with either Windows Update's "Microsoft .NET Framework 3.5 Service pack1" or ".NET Framework 3.5 Family Update" after January 27, 2009.

✧ **Malfunction**

A malfunction occurs, when Windows® operating systems have been updated with either Windows Update's "Microsoft .NET Framework 3.5 Service pack 1" or ".NET Framework 3.5 Family update program". This malfunction prevents computers that are running ScandAll PRO with "Scan to Microsoft SharePoint" linking functionality with Microsoft® SharePoint™ Server. It also causes one of the following linkage error messages to appear when the computer is turned on and / or logged into.

✧ **Conditions under which linkage error messages appear**

Condition 1	An error message appears when a Windows® operating system using computer is turned on and / or logged onto.
Condition 2	An error message appears when "Scan to Microsoft SharePoint" is activated by "ScandAll PRO".

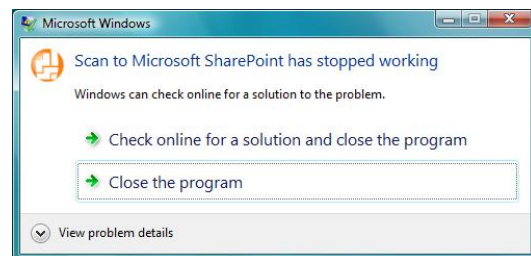
✧ **An error message of Windows® operating system appear when using ScandAll PRO with "Scan to Microsoft SharePoint".**

The following error messages are examples for Windows® XP and Windows Vista™.

Windows® XP



Windows Vista™



An error message does not appear when ScandAll PRO and "Scan to Microsoft SharePoint" are used with Windows Server™ 2003 R2.

This malfunction occurs with computers that run on one of the following operating systems:

- Windows® XP Home Edition (32bit)
- Windows® XP Professional (32bit / 64bit)
- Windows Server™ 2003 R2, Standard Edition (32bit / 64bit)
- Windows Vista™ Home Basic (32bit / 64bit)
- Windows Vista™ Home Premium (32bit / 64bit)
- Windows Vista™ Business (32bit / 64bit)
- Windows Vista™ Enterprise (32bit / 64bit)
- Windows Vista™ Ultimate (32bit / 64bit)
- Windows Server™ 2008 Standard (32bit / 64bit)
- Windows Server™ 2008 R2 Standard (64bit)
- Windows® 7 Home Premium (32bit / 64bit)
- Windows® 7 Professional (32bit / 64bit)
- Windows® 7 Enterprise (32bit / 64bit)
- Windows® 7 Ultimate (32bit / 64bit)