

Magic Desktop

Magic Desktop Installation Instructions with Installation Media V1.0L10

Version 1.0

- The contents of this manual may be revised without prior notice.
- PFU LIMITED assumes no liability for damages to third party copyrights or other rights arising from the use of any information in this manual.
- No part of this manual may be reproduced in any form without the prior written permission of PFU LIMITED.

Introduction

This manual describes how to install Magic Desktop with the installation media, Magic Desktop V1.0L10.

<Workflow>

- 1 When your PC is connected to the internet
- 2 When your PC is not connected to the internet

This manual uses Windows® 7 screenshots for explaining operations.

Button and selection item names may vary depending on the operating system.

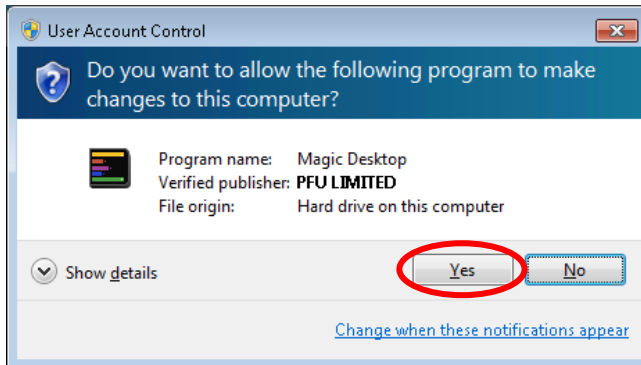
<Cautions for Installation>

- * To install this product, please log in as Administrator or a member of Administrators Group (or as a user having administrative right).
- * End all applications before beginning the installation.
- * When downloading the installer for this product, you may see an alert from the Windows firewall or anti-virus software.
If you see an alert from the Windows firewall, please select [Allow].
If you see an alert from the anti-virus software, please refer to the Help page or manual supplied with the anti-virus software for details.
- * This product cannot be installed on a network disk or removable disk.
- * This product cannot be installed in the folder where Rack2-Filer, Rack2-Viewer or Rack2-Filer Smart is installed.
- * When installing this product, do not use environment-dependent characters (exclusive to Unicode) for the login user name and program installation folder.

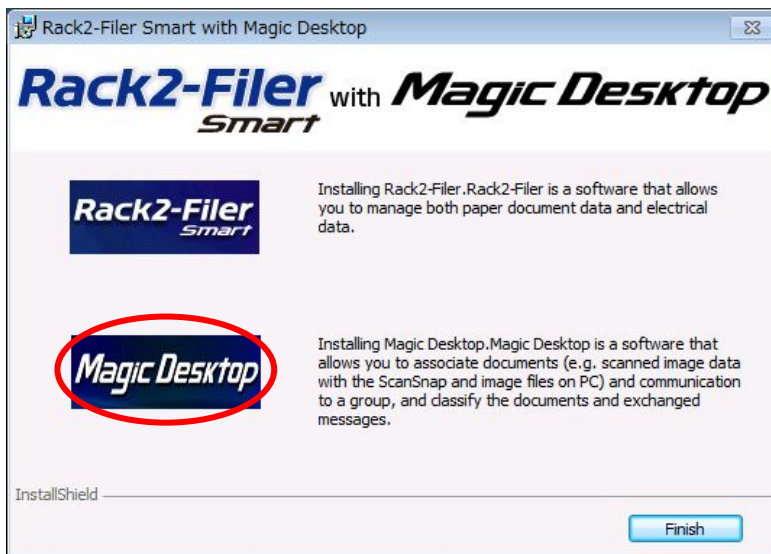
1 When your PC is connected to the internet

1 Double-click setup.exe in the installation media.

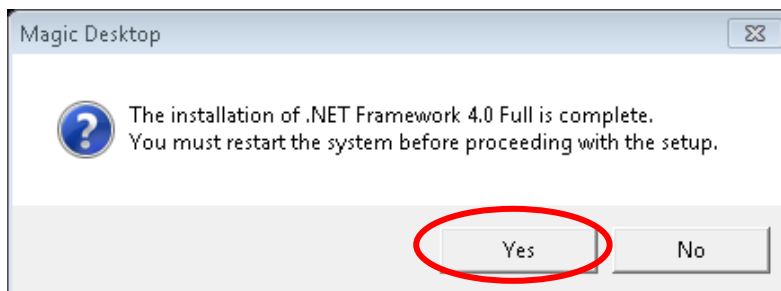
- * When Windows Vista®, Windows® 7, Windows® 8 or Windows® 8.1 is used, the [User Account Control] window might appear after setup.exe is run. If this window appears, click [Continue] or [Yes].



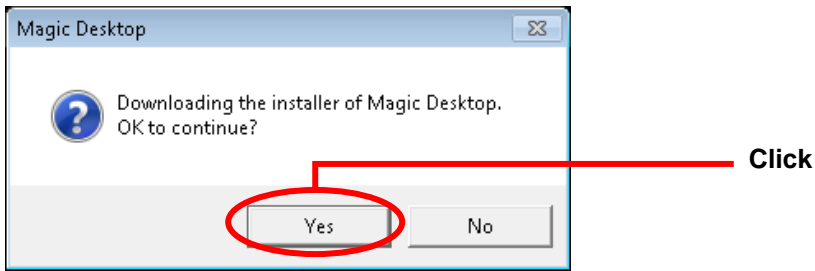
- * When installing from Rack2-Filer Smart with Magic Desktop, click [Magic Desktop] to start installation.




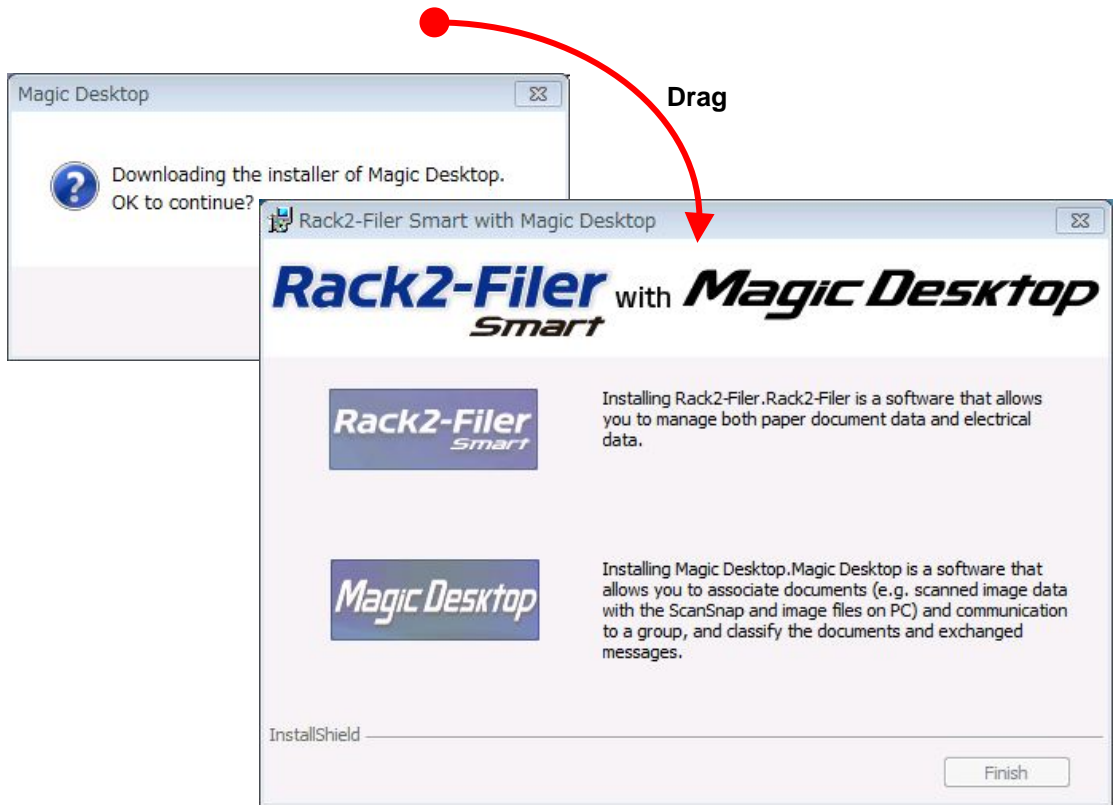
- * When .NET Framework 4 or later is not installed in your PC, the following window appears. Click [Yes] on this window to install .NET Framework 4.



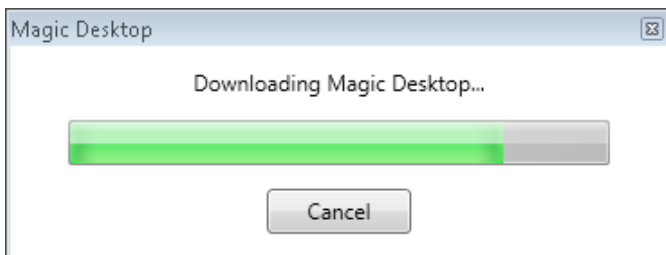
2



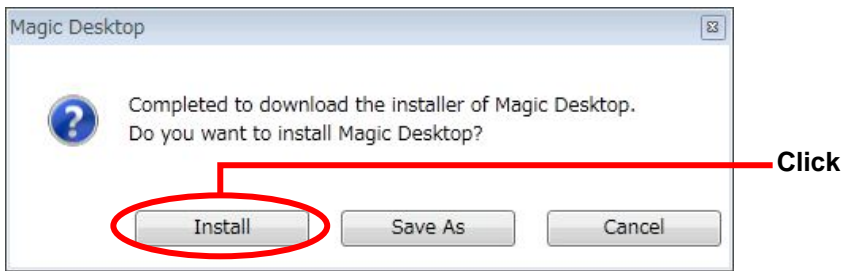
- * When installing from Rack2-Filer Smart with Magic Desktop, this dialog window may be hidden behind other windows. Click the [Magic Desktop] button, and if the wait cursor  keeps appearing, drag the above dialog window to the top.



3 The installer for Magic Desktop is downloaded.

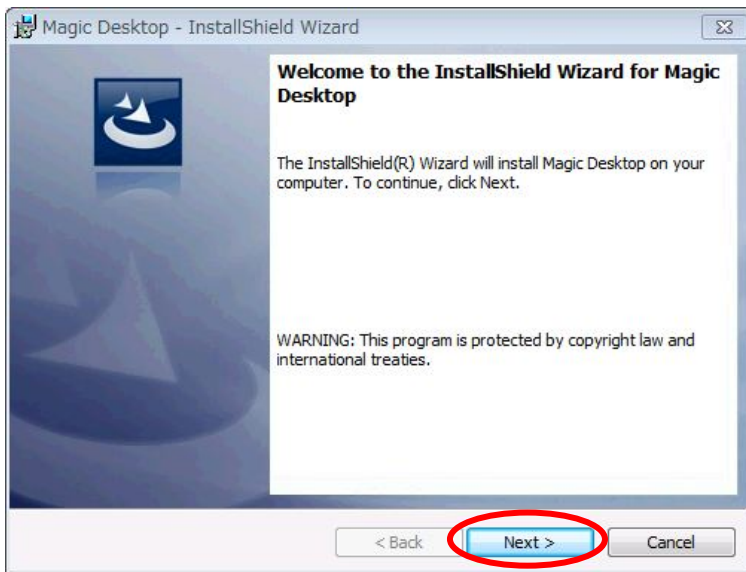


4



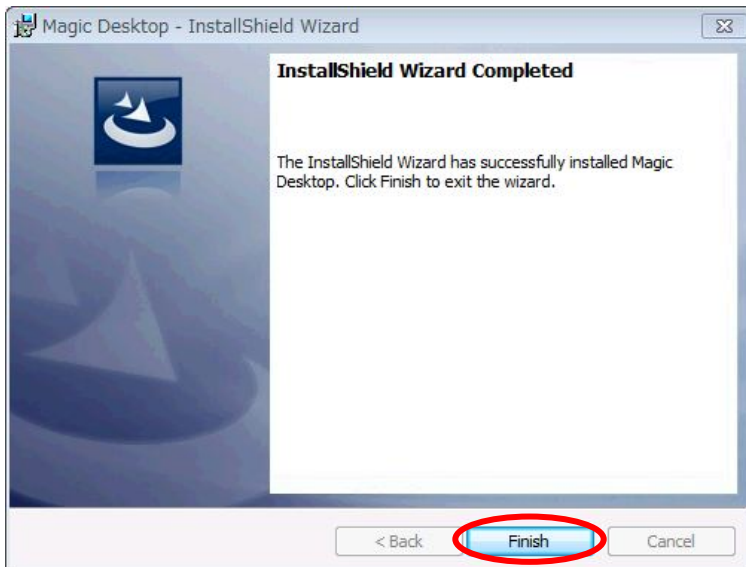
5

Installation for Magic Desktop starts. Continue with the installation following the directions in the installer window.

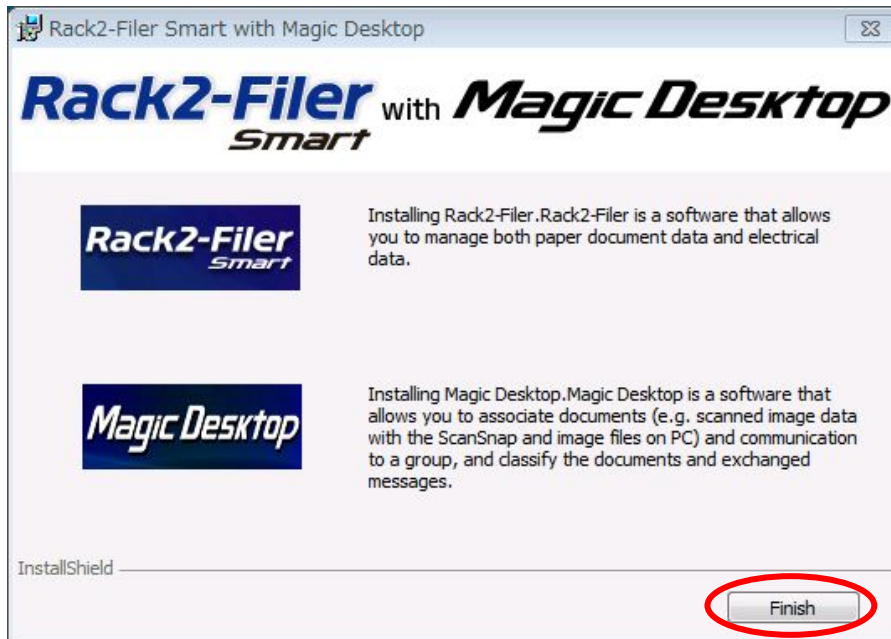


6

The [InstallShield Wizard Completed] window appears after installation is complete.



- * When installing from Rack2-Filer Smart with Magic Desktop, click the [Finish] button.



2 When your PC is not connected to the internet

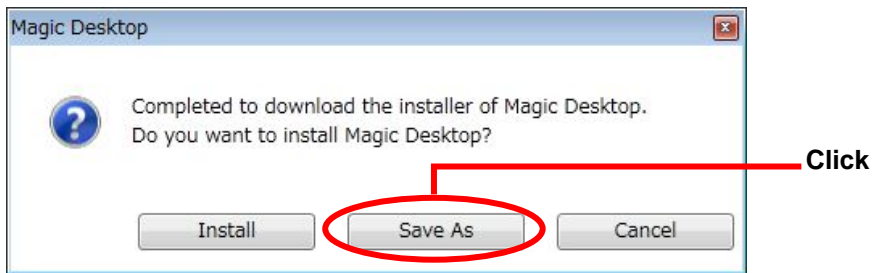
Please download and save the installer for Magic Desktop to a PC which has the internet connection.

Copy the saved installer to the PC where you want to install and then install Magic Desktop.

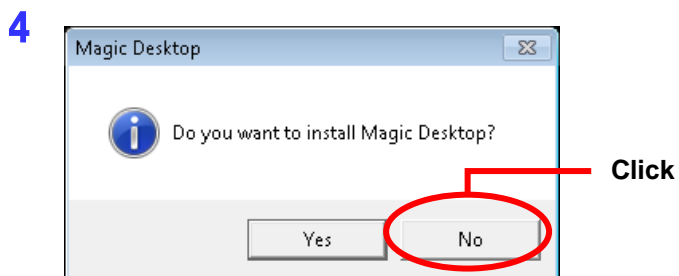
- Take Steps 1 – 4 below with the PC which has the internet connection to download the installer for Magic Desktop.

1 Double-click setup.exe in the installation media like Step [1 When your PC is connected to the internet] – 1 (Page 3) and continue to follow the directions up until Step 1 – 3.

2 Click [Save As] on the window in the above Step 1 – 4.



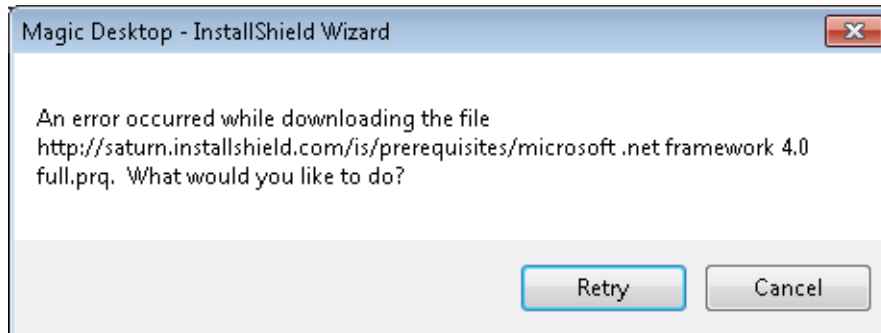
3 Save the downloaded installer [MDV10Lxx.exe] (xx indicates the version level) to any folder you like.



- Take Steps 5 – 7 below with the PC where you want to install Magic Desktop.

5 Using an external media like a USB memory, copy the installer [MDV10Lxx.exe] (xx indicates the version level) to the PC where you want to install and then run the installer.

- * When .NET Framework 4 or later is not installed in the PC where you install Magic Desktop, the following message appears.



Please install .NET Framework 4 from the installation media prior to installing Magic Desktop.

When you double-click [dotNetFx40_Full_x86_x64.exe] in the folder [ISSetupPrerequisites¥{32D7E3D1-C9DF-4FA6-9F9B-4D5117AB2917}], which is directly in the installation media, the installer for .NET Framework 4 starts running. Continue with the installation following the directions in the installer window. When installing from Rack2-Filer Smart with Magic Desktop, the installer can be found in the folder [MagicDesktop¥ISSetupPrerequisites¥{32D7E3D1-C9DF-4FA6-9F9B-4D5117AB2917}].

6 Installation for Magic Desktop starts. Continue with the installation following the directions in the installer window.

7 The [InstallShield Wizard Completed] window appears after installation is complete.

- * When installing from Rack2-Filer Smart with Magic Desktop, click the [Finish] button.

End of the Document