

Installation Procedure for Firmware

Follow the instructions below to update firmware.

For details on how to distribute firmware through Scanner Central Admin (to the scanners operated by PaperStream NX Manager or PaperStream IP), refer to the User's Guide for the software.

1. Use a computer where PaperStream IP driver has been installed.
2. Download the firmware update file onto the hard disk.
3. Quit any applications that are running on the computer.
4. Connect the computer and the scanner to update via the USB cable or network.

USB

Connect the scanner and the computer via the USB cable bundled with the scanner, and then confirm the scanner icon appears in [Devices and Printers] under Control Panel.

Network

Connect the scanner and the computer via a network. Using Scanner Selection Tool for fi Series, confirm the scanner to be connected.

Hint:

The firmware update searches for a scanner to update in the following order and update the firmware of the scanner found first.

(Order of scanner searching has nothing to do with how to connect to the scanner.)

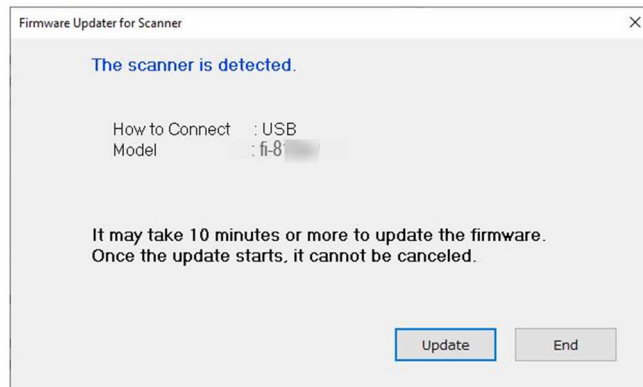
- 1) Scanner selected with "Scanner Selection Tool for fi Series".
- 2) Scanner connected with the USB cable.

5. Run the downloaded file to create a folder with the same name.
6. Run FisRomWt.exe in the folder created in step 5, and then the dialog below appears.
Select [Yes] to start firmware update.

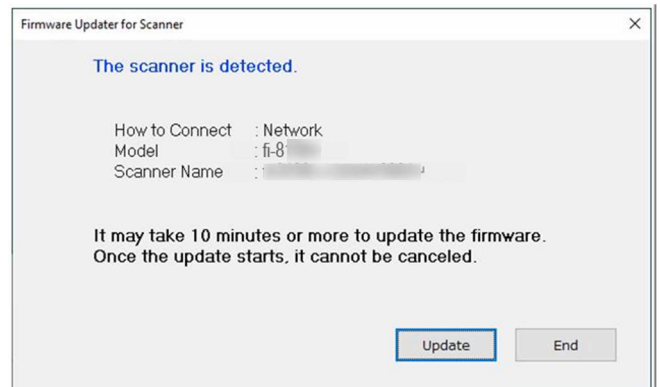
NOTE:

When the scanner and the computer are connected via network, make sure that the settings screen is not displayed on the LCD of the scanner before performing the firmware update.

USB connection



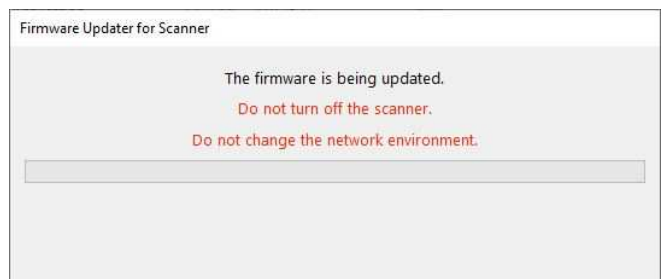
Network connection



USB connection



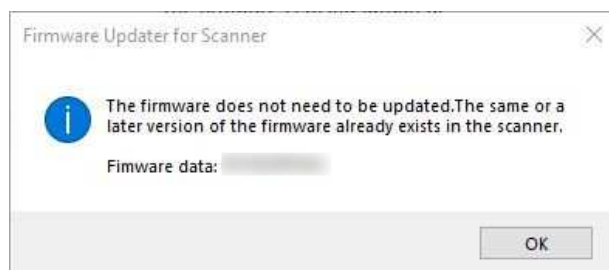
Network connection



Hint:

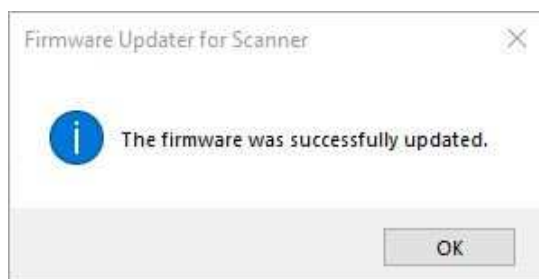
When the firmware has already been updated, the following dialog appears.

Press [OK] to close the dialog.



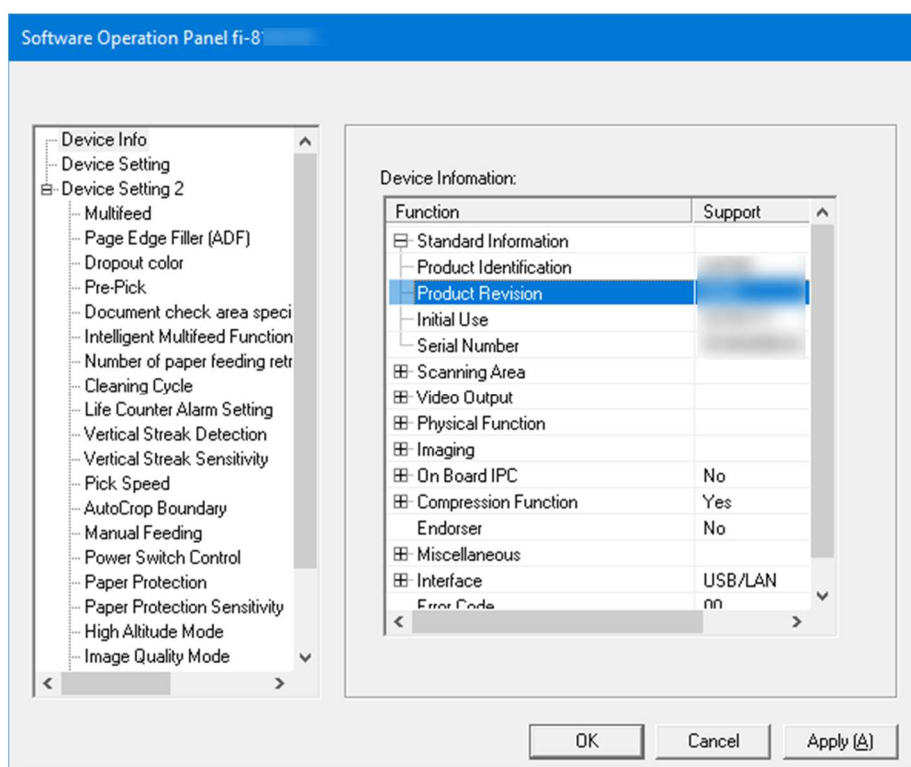
7. Once the update is done, the following dialog appears.

Press [OK] to close the dialog.



8. Check the firmware version in the "Software Operation Panel".

- 1) Start the Software Operation Panel. Refer to the Operator's Guide for instructions on how to start it.
- 2) Click [Device Info], then click the + button for [Standard Information].
- 3) Make sure the version displayed in [Production Revision] is the same as the version displayed on the download page.



NOTE:

- Do not start any applications for image scanning during a firmware update.
If you launch a resident application such as PaperStream ClickScan, the update may fail.
- If the firmware update fails, retry the following procedure.
 - 1) Turn the scanner back on
 - 2) Re-execute from step 4 of the update procedure.