

# PaperStream IP (TWAIN) change history

## V3 Service Update 3

### Version 3.30.0

#### New features:

1. Setting of [Background color] was added when [Cropping] is [Automatic Size] selected (Only at ADF reading).  
When clipping a dark-colored document, white background color improves the accuracy of clipping.  
(Target scanners: fi-8290, fi-8190, fi-8270, fi-8170, fi-8250, fi-8150, fi-8250U and fi-8150U)
2. Moire Reduction (Advanced) now can be set with the PaperStream IP driver's UI and Software Operation Panel.  
(Target scanners: fi-8950, fi-8930, fi-8820)
3. PaperStream Improvement Program is now supported.
4. fi-6770, fi-6750S, fi-6670 and fi-5530C2 are no longer supported.
5. The following operating systems are no longer supported:  
Windows Server® 2012 Standard, Windows Server® 2012 R2 Standard

#### Improvements:

1. When the passport is read with fi-70F, the problem where the Machine Readable Zone (MRZ) cannot be detected correctly has been corrected.
2. The problem where the fi scanner may not be recognized by Paperstream IP (ISIS) when another USB device is connected has been corrected.
3. Fixed other minor problems.

## V3 Service Update 2

### Version 3.26.2

#### Corrected issue:

1. Fixed the problem that occurs when an imprinter is used with some applications, causing an application error.

### Version 3.26.1

#### New feature:

1. fi-8950, fi-8930, fi-8820 are now supported.

#### Corrected issues:

1. Fixed the problem where if PaperStream IP started scanning while the scanner is in power save mode, the imprinter would not print even if the print settings were configured.
2. Fixed the problem where scanning from PaperStream Capture could slow down the reading speed in an environment where Scanner Central Admin Agent and PaperStream ClickScan are resident.

### Version 3.24.0

#### New feature:

1. PaperStream IP OCR Optimization Assistant for fi Series is now supported.

### Version 3.20.0

#### New features:

1. fi-8040 and fi-70F are now supported.
2. fi-6140Z, fi-6240Z, fi-6130Z, fi-6230Z, and fi-6110 are no longer supported.

3. The following operating systems are no longer supported:  
Windows®7 Professional, Windows®7 Enterprise, Windows®8.1,  
Windows®8.1 Pro, Windows®8.1 Enterprise, Windows Server® 2008  
R2 Standard
4. The 2D Barcode option is now included in the driver installer, eliminating  
the need for a separate installation.

## **V3 Service Update 1**

### **Version 3.10.0**

#### **New features:**

1. Scanners with IPv6 addresses are now supported.  
(Target scanners: fi-8190, fi-8290, fi-8170, fi-8270, fi-8150, fi-8250)  
\* The scanner firmware version must be updated to 0E00 or later.
2. You can now change the quality of images transferred from the scanner  
when the scanner is connected to a network and used.  
(Supported by PaperStream IP driver 3.6.0 or later)  
(Target scanners: fi-8190, fi-8290, fi-8170, fi-8270, fi-8150, fi-8250)

### **Version 3.0.2**

#### **Corrected issue:**

1. Fixed other minor problems.

### **Version 3.0.1**

#### **New features:**

1. Added a function to automatically correct the orientation of the image  
based on the pre-registered information on the reference area for  
detecting the document orientation.

This enables the document orientation to be corrected for images whose orientation cannot be corrected even when [Automatic] is selected for [Rotation] in [Page].

Select the [Use custom rotation settings] check box to enable this function.

2. Added a function to automatically detect a passport when scanned on a flatbed.

This function is available with PaperStream Capture.

3. Added a function to detect the size of the document inside the Carrier Sheet and to output the image in the same size as the document when the Carrier Sheet is used.

This option can be set in [Carrier Sheet] in [Preferences].

#### **Improvements:**

1. The scanner driver window has been renewed.
  - Added some setting items in the Simple dialog.
  - Improved the visibility and the accessibility of the setting items.
2. The installer is now also available in iso file format on the Software Downloads site.

## **V2 Service Update 1**

### **Version 2.10.3**

#### **Corrected issue:**

1. Fixed the problem that occurs when a scan is performed under the following conditions, causing abnormal end or hangup of the scanning application.
  - Driver: PaperStream IP (TWAIN/TWAIN x64) 2.10.1

- App: PaperStream Capture, or an app that shows no driver window during scan
- User: No administrative privileges

## **Version 2.10.1**

### **Corrected issue:**

1. Fixed the problem that may occur when scanning a document with Continuous Scan enabled, mislocating the message that asks if you want to continue scanning.

## **Version 2.10.0**

### **New features:**

1. fi-7900, fi-7800, and fi-800R are supported.
2. Windows Server® 2008 Standard has been removed from supported OS list.
3. Front Side Detection has been added.  
(fi-800R only)
4. Automatic Profile Selection has been added.
5. Through our unique image processing technology, it now outputs black and white images which are appropriate for OCR processing.
6. Software Operation Panel
  - Energy Star® 3.0 is now supported. The maximum period of time which the scanner automatically moves to power saving mode has been changed from 235 to 115 mins.
  - The period of time which the stacker automatically closes after a scan is now adjustable.  
Adjustable between 0 and 10 seconds in 1 second increment.  
(fi-800R only)

## Service Update 8

### Version 1.60.0

#### New features:

1. fi-7300NX is supported.
2. Color Adjustment has been added.  
(fi-7700, fi-7700S, fi-7600, fi-7480, fi-7460, fi-7300NX, fi-7180, fi-7280, fi-7160, fi-7260, fi-7140, fi-7240, fi-7030, fi-6800, fi-6400, and fi-65F only)

#### Improvements:

1. Cropping accuracy has been improved in scanning by flatbed scanner with the document cover opened under the setting where [Cropping] is set to [Automatic] and [Block ambient light] is specified for [Image Processing] under [Configuration].  
(fi-7700, fi-7700S, fi-7280, fi-7260, and fi-7240 only)
2. Accuracy in automatic rotation has been improved in scanning business-card-size documents with background pattern in color under the setting where [Page] under [Rotation] is set to [Automatic].  
(fi-7700, fi-7700S, fi-7600, fi-7480, fi-7460, fi-7300NX, fi-7180, fi-7280, fi-7160, fi-7260, fi-7140, fi-7240, fi-7030, fi-6800, fi-6400, fi-6770, fi-6750S, fi-6670, fi-6140Z, fi-6240Z, fi-6130Z, fi-6230Z, fi-6110, fi-5950, fi-5530C2, and fi-65F only)
3. Cropping accuracy has been improved in scanning dark color documents under the setting where [Cropping] is set to [Automatic].  
(fi-7700, fi-7700S, fi-7600, fi-7480, fi-7460, fi-7300NX, fi-7180, fi-7280, fi-7160, fi-7260, fi-7140, fi-7240, fi-6800, fi-6400, fi-6770, fi-6750S, fi-6670, fi-6140Z, fi-6240Z, fi-6130Z, fi-6230Z, fi-5950, and fi-5530C2 only)

## Service Update 7

### Version 1.56.1

**Corrected issue:**

1. Fixed the problem that scanning failed when using the scanner through PaperStream IP Net.

**Version 1.50.0.6382****New features:**

1. fi-7600, fi-7700, and fi-7700S are supported.
2. Added the [Target Document] option to [Front/Back Merging].  
This option determines whether to merge front and back pages in accordance with the length of the document.  
(fi-7140, fi-7240, fi-7160, fi-7260, fi-7180, fi-7280, fi-7460, and fi-7480 only)

**Corrected issue:**

1. Fixed other minor problems.

**Version 1.42.0.5685****New feature:**

1. fi-7030 is supported.

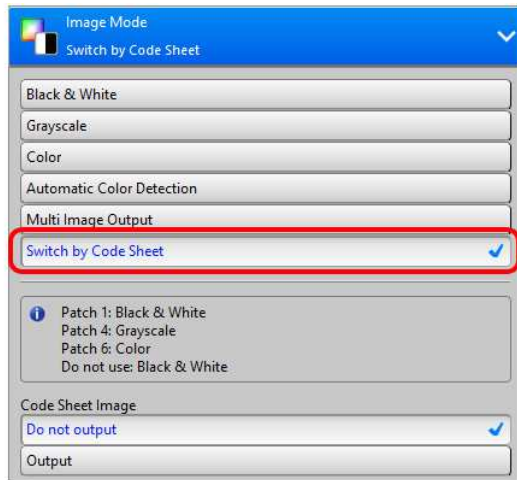
**Corrected issues:**

1. Fixed the problem where PaperStream IP may not function correctly if the user name that is being logged on to the computer includes characters other than alphanumeric characters.
2. Fixed other minor problems.

**Version 1.42.0.5555****New features:**

1. fi-7460 and fi-7480 are supported.
2. Added the [Switch by Code Sheet] function to Image Mode. This function allows to switch the image type for the output during scanning (the

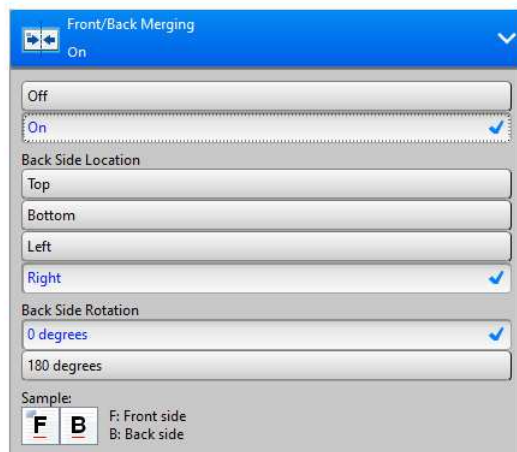
[Switch by Code Sheet] function is not available in fi-65F).



3. Added the [Front/Back Merging] function which combines front and back side of paper into one page (the [Front/Back Merging] function is not available in fi-6750S or fi-65F).

**Attention:**

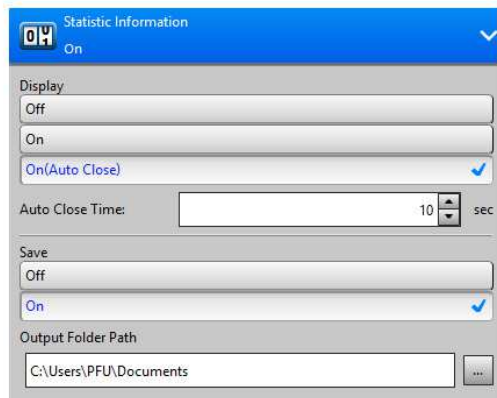
PaperStream Capture v1.5 or later supports this function.



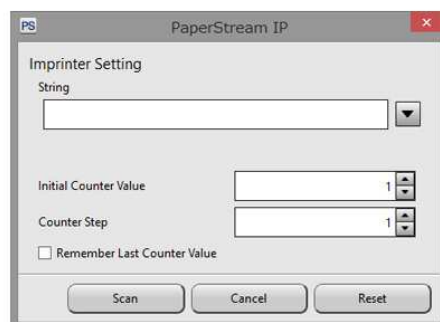
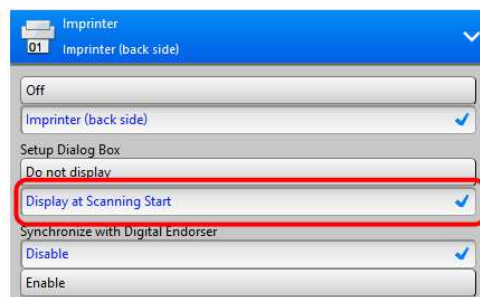
4. Added the [Statistic Information] function which allows to collect scanning information such as the scanner model used or the number of images



outputted by the scanner.



5. Added the [Display at Scanning Start] function to Imprinter. This function allows changing a character string and counter values temporarily before starts scanning.



6. Added the [Carrier Sheet] function (fi-7480 and fi-7460 only).

### Improvement:

1. Cropping accuracy in long page scanning has been improved (except fi-65F).

### Corrected issues:

1. Fixed the problem where ScanSnap Manager for fi Series might close unexpectedly when scanning an Carrier Sheet (except fi-5950, fi-6800, fi-6400, and fi-65F).
2. Fixed the problem where the driver GUI might be misplaced off the screen in Arabic environment.
3. Fixed the problem which blank pages with index tab were detected as blank pages even when selecting "Exclude index-tabbed pages" (Some scanner models are not subject to the correction).

## **Service Update 6**

### **Version 1.30.0.5032**

#### **Corrected issue:**

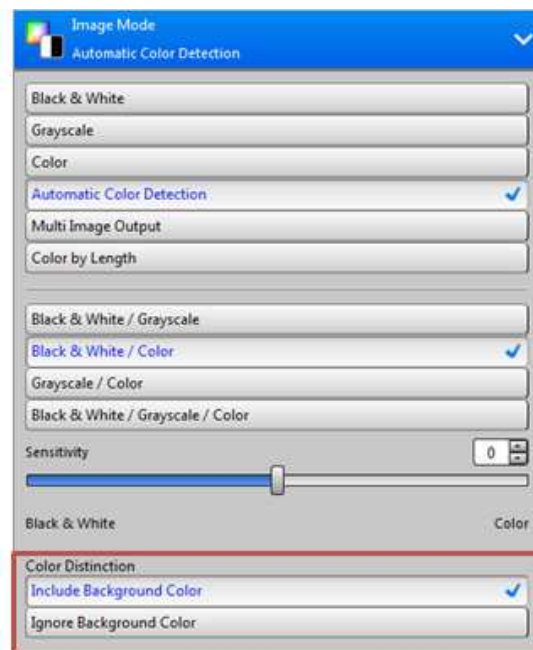
1. Fixed the defect that Software Operation Panel could not function properly or could stop responding when two or more scanners were connected to one computer simultaneously.

### **Version 1.30.0.4863**

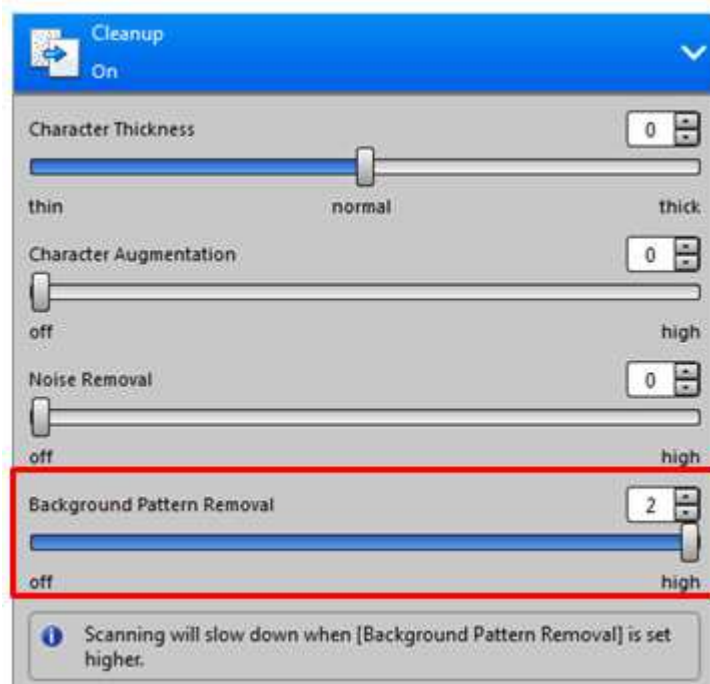
#### **Added features:**

1. fi-7140 and fi-7240 are supported.
2. The [Color Distinction] category has been added to the [Automatic Color Detection] settings.

When [Ignore Background Color] is enabled, a document printed on a background color paper can be processed as a monochrome document.



3. The interface of [Background Pattern Removal] has been changed from switch buttons to the slider bar.



4. The [Mode] category has been added to the [Hole Punch Removal] settings. When [Mode] is set to [Advanced], a large punched hole (up to 13 mm in diameter) or a non-circular punched hole (see a sample below)

can be removed ([Hole Punch Removal] is not available in fi-6110 or fi-65F).



### Improvements:

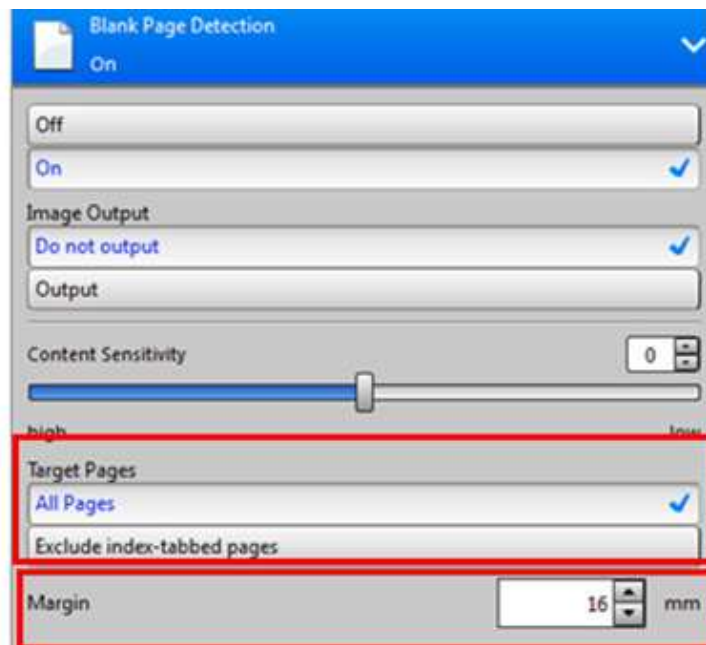
1. Accuracy of detecting barcodes in documents where two or more barcodes exist has been improved.
2. “Device Stage” feature has been removed from the installer to reduce its size, and thereby the download time is shortened (Device Stage is not included in the installer for fi-5950, fi-6800, fi-6400, fi-6770, fi-6750S, fi-6670, or fi-5530C2).
3. [Accuracy] in the [Priority] settings of [Cropping] - [Automatic Size] settings has been enhanced, aiming for reducing possibility of cropping failure caused by vertical streaks on the image (The [Priority] settings are not available in fi-6750S, fi-6110 or fi-65F).
4. Some descriptions in Arabic or in Russian have been revised.
5. The window to select a scanner has been added to the Software Operation Panel. The scanner to configure can be selected during startup of Software Operation Panel when two or more scanners are connected.
6. [Vertical Streak Detection] displays a popup balloon from Error Recovery Guide Tool when vertical streaks are detected (fi-7280 / fi-7180 / fi-7260 / fi-7160 / fi-7240 / fi-7140 only).

## Service Update 5

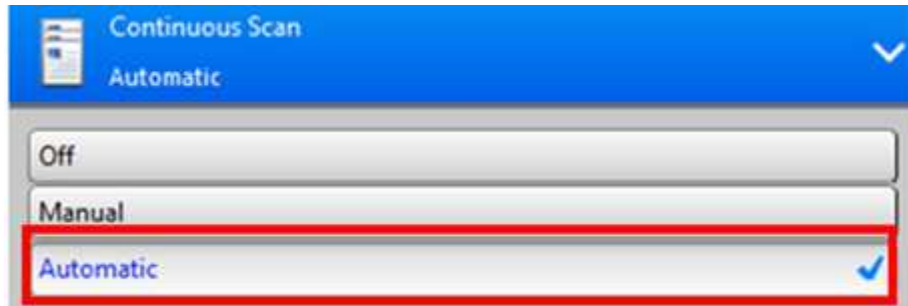
### Version 1.21.0.4179

#### Added features:

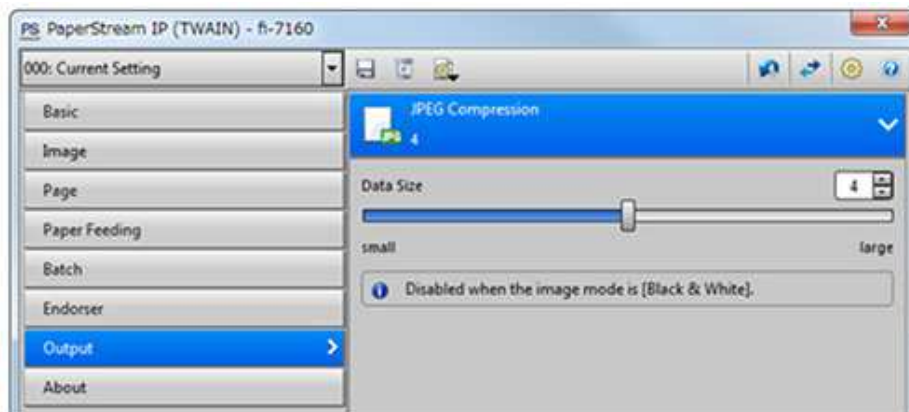
1. Added [Target Pages] and [Margin] settings to [Blank Page Detection], whereby the target pages of the detection can be selected (except fi-65F).
  - 1.1. The [Target Pages] allows you to select whether index-tabbed pages will be included in the target of the detection.  
Note: To use this feature, go to [Configuration] > [Image Processing] and set [Index Tab] to [Output].
  - 1.2. The [Margin] allows you to set the (width of) margin area from the document edge which will not be screened for the blank page detection.



2. Added [Automatic] feeding feature to [Continuous Scan], whereby the scan starts automatically after loading documents on the ADF chute (except fi-65F).

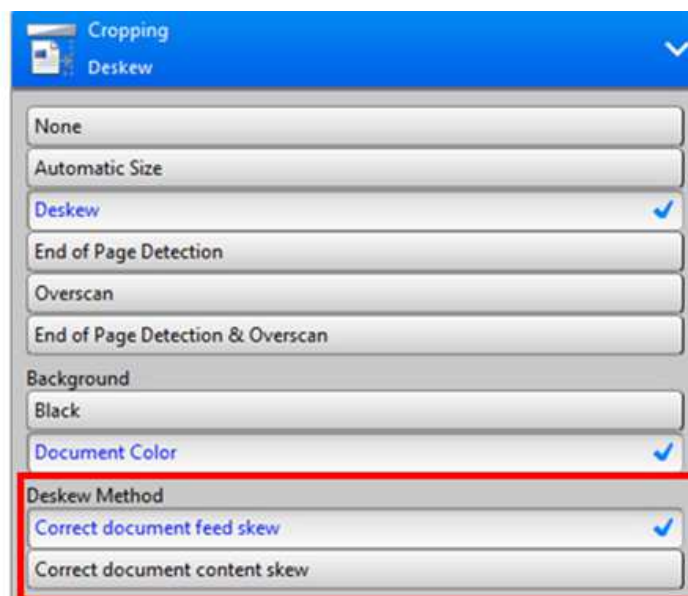


3. Added the feature to adjust image size when outputting JPEG image.

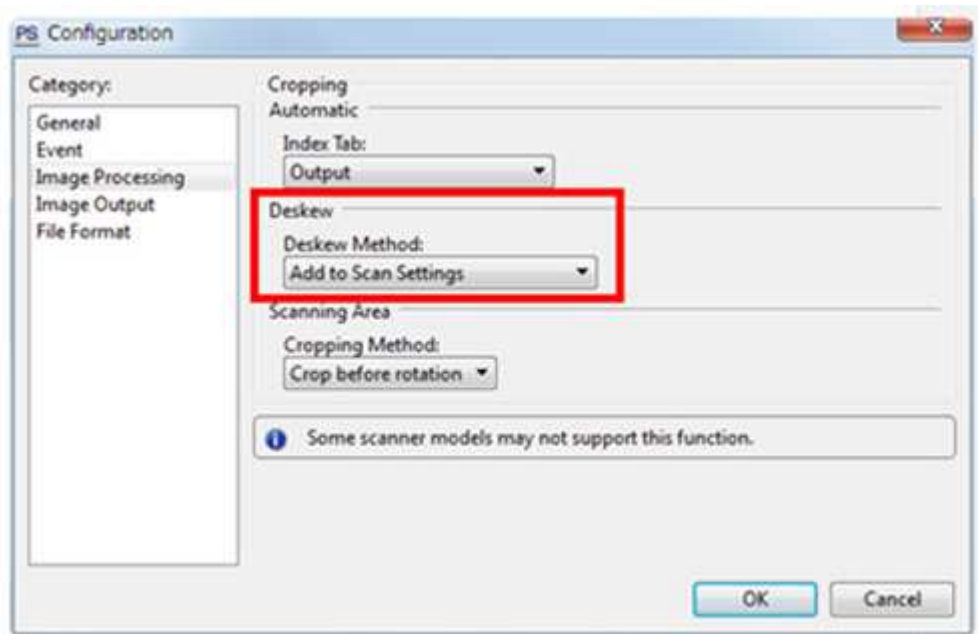


## Improvements:

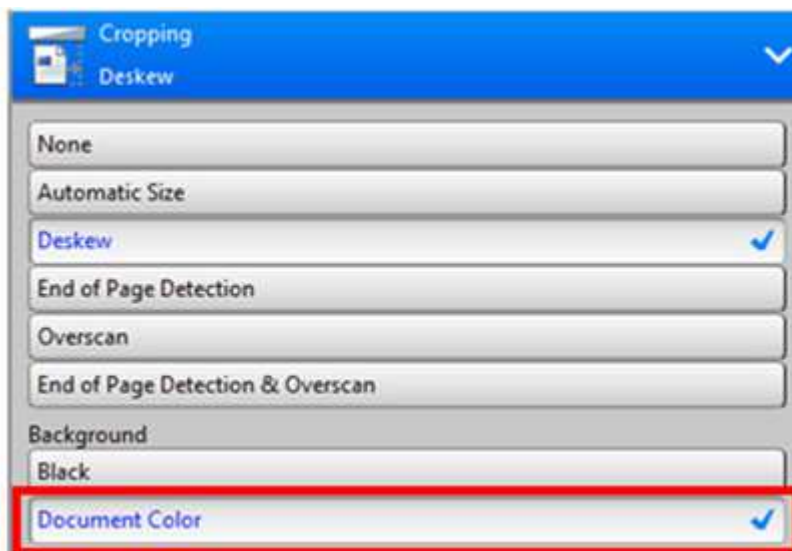
1. [Deskew Method] can be also set from [Normal dialog].



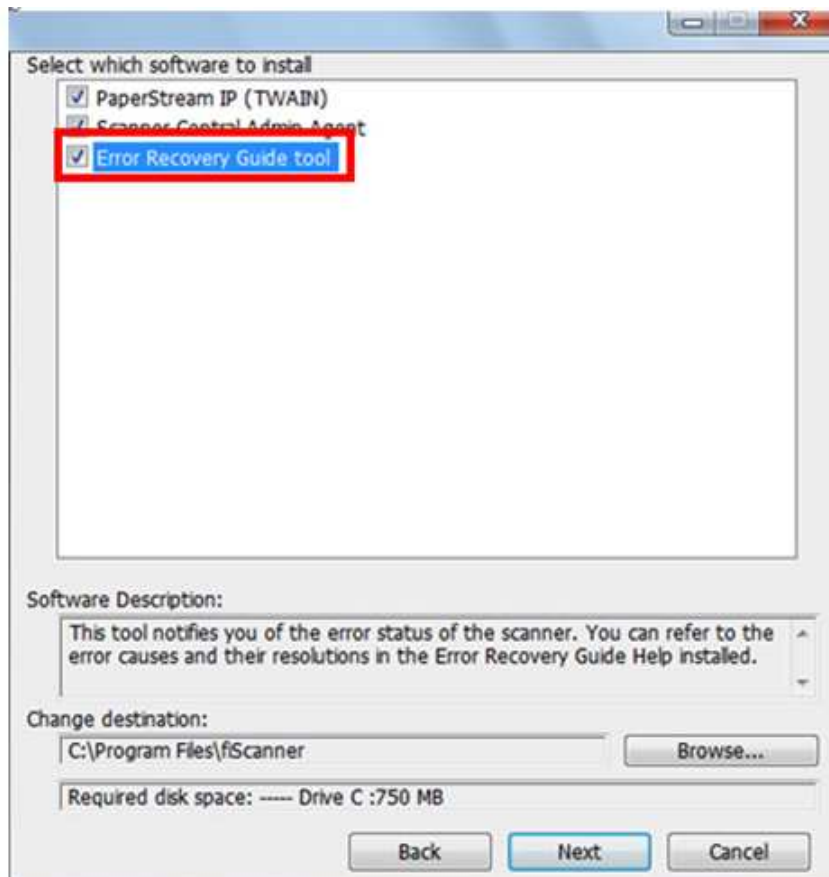
Configurations in the [Normal dialog] can be saved to a profile so that you can select a different [Deskew Method] for each document.  
Note: To use this feature, go to [Configuration] > [Image Processing] and set [Deskew Method] to [Add to Scan Settings].



2. Renamed [Background Color] in [Background] of [Deskew] to [Document Color].



- Whether the Error Recovery Guide runs automatically during Windows® startup or not can be selected during installation of PaperStream IP driver. To exclude Error Recovery Guide from the Windows® startup, clear the checkbox for [Error Recovery Guide tool].



- Setup.exe runs automatically after running (extracting) the compressed execution file of the driver installer.

### **Corrected issues:**

- Fixed the following defect that a part of image is not outputted or unnecessary image is outputted in flatbed scanning (It doesn't occur in fi-65F):
  - The edge of image is cut by cropping.
  - The inside of the document is cut by cropping.
  - Cropping is out of place when running [Deskew].



2. Fixed the defect that an application may end abnormally when modules of PaperStream IP are loaded.
3. Fixed the defect that [Select Scanner] is not available in some applications.
4. Fixed the defect that [Hole Punch Removal] does not work properly with some type of documents (It doesn't occur in fi-6110/fi-65F).

## Service Update 4

### Version 1.10.0.3791

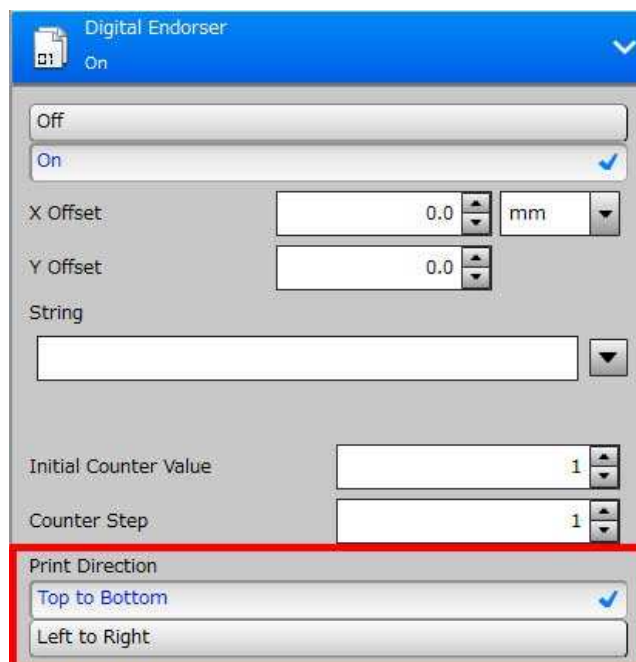
#### Corrected issue:

1. Fixed the issue of ScanSnap Manager for fi Series not working in the environment where PaperStream IP (TWAIN) 1.10.0.3690 is installed.

### Version 1.10.0.3690

#### Added features and improvements:

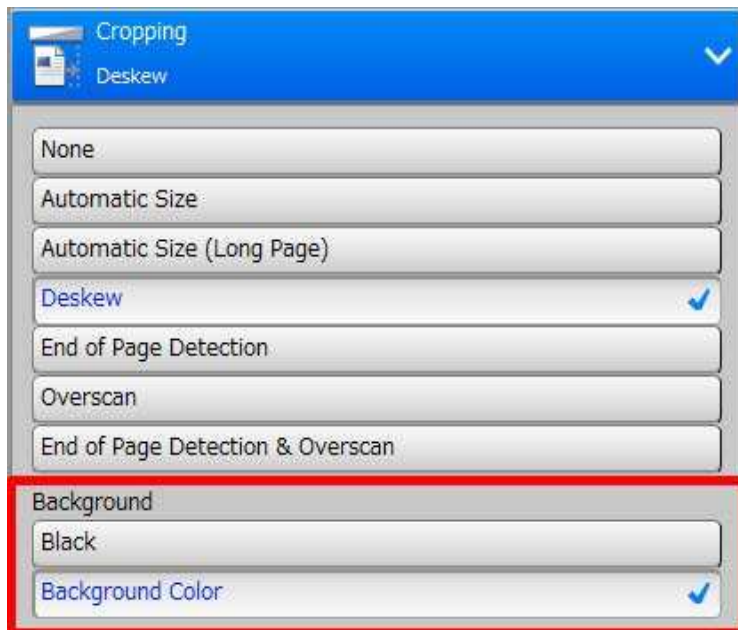
1. Added [Left to Right] for [Print Direction] in [Digital Endorser]. It enables to print a text from left to right.



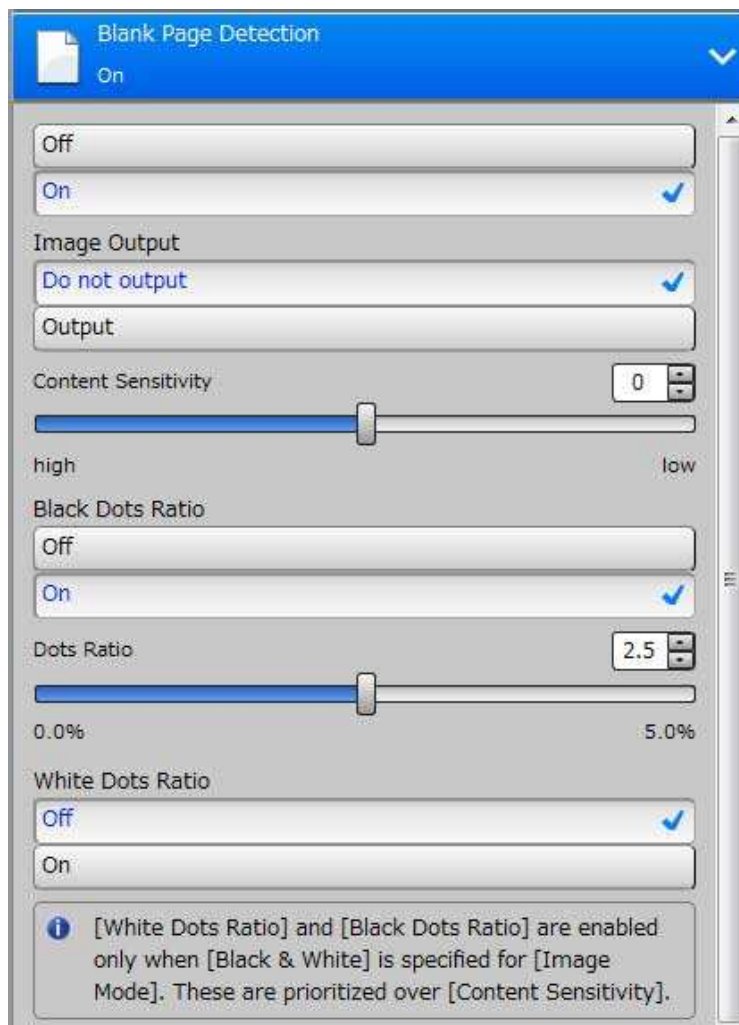
2. Added [Aztec Code] of two-dimensional codes for [Type] in [Barcode Detection].

**Note:** "2D Barcode for PaperStream 1.1.0" or later is required to use [Aztec Code].

3. Added [Background] in [Deskew] setting of [Cropping] feature. [Background Color] enables to specify the document color as background color.



4. Improved the followings in [Blank Page Detection] window (except fi-65F):
  - Improved the captions of [Sensitivity].
  - Changed [Black & White Dots Ratio] setting into [Black Dots Ratio] and [White Dots Ratio] separately.



5. Improved the followings in [Blank Page Detection] window (except fi-65F):
  - Improved the captions of [Sensitivity].
  - Changed [Black & White Dots Ratio] setting into [Black Dots Ratio] and [White Dots Ratio] separately.
6. Improved the Arabic description of [Cropping].
7. Improved the followings in [Assisted Scan] window:
  - Only selectable buttons are displayed in [Automatic Color Detection] switch button.
  - Changed [Save Profile] option to a button.
  - Improved button layout in an Arabic environment.

### **Corrected issues:**

1. Fixed the defect that insufficient memory error may occur when specifying [Scanning Area] and scan long page.
2. Fixed the defect that an image rotated by 180 degree may be outputted when back-side scanning is configured.
3. Fixed the description of [Endorser] of [Normal dialog] in a Russian environment.
4. Fixed the defect that [TIFF conversion failed] error may occur when a large amount of documents are scanned with PaperStream Capture.
5. Fixed the defect that the PaperStream IP driver may stop responding during scanning when duplex scan is performed in the following scan settings:
  - Set to [Accuracy] for [Priority] of [Cropping]
  - Set [0] or higher for [Sensitivity] of [Blank Page Detection]
6. Fixed the defect that the PaperStream IP driver may not be able to respond when an error occurs in the following Triplets:
  - DG\_CONTROL/DAT\_USERINTERFACE/MSG\_ENABLEDS
  - DG\_CONTROL/DAT\_USERINTERFACE/MSG\_ENABLEDSUIONLY

## **Service Update 3**

### **Version 1.8.0.3456**

#### **Corrected issue:**

- An internal error may occur in the driver when [Rotation] is set to [Automatic] and when a document has a particular pattern.

### **Version 1.8.0.3303**

#### **Added improvements:**

#### Changes in Assisted Scan

- Added [Marquee Zoom] to.
- Added the feature to switch the rotation direction to.

- Added the feature to change the Auto color detection results to.
- Added the blank page notification feature to (except fi-65F).
- Added [Rescan] to.
- Added the feature to change the window size of.
- Replaced the [Restore Original], [Undo], and [Redo] buttons with the respective icons in.
- Moved the [Save Profile] button into the [Option] button which is newly added.

#### Changes in other features

- Added [Black & White Dots Ratio] in the [Blank Page Detection] methods (except fi-65F).
- Added a link to “Product Support website” in the Start Menu.
- The default parameters are revised as below (only when the user locale is set to English (United States), English (Canada), or French (Canada)):  
 Paper Source: [Feeder (Front Side)] to [Feeder (Both Sides)]  
 Blank Page Detection: [Off] to [On]  
 Image Output: Do not output  
 Edge Filler: [Off] to [On]  
 Fill Color: White  
 Filled Area: 0.1 inch  
 Paper Size: [Letter] to [Double Letter] (A3 unit), Letter (A4 unit)  
 Dropout Color: [Green] to [None]  
 Hole Punch Removal: [Off] to [On]  
 Fill Color: Background Color

#### Corrected issues:

- Fixed the defect that the driver window may appear in a place where the user cannot operate when it is reopened in multi-display environment. This occurs after the driver window is closed and then the number of displays is reduced or the arrangement of the displays is changed before the window is reopened.
- Fixed the defect that Automatic Image Quality Checker (AIQC) may not be notified correctly when scanning with both [Blank Page Detection] and [Multifeed Detection] enabled.

- Fixed the defect that the existing exported file is lost when using the Scanning Profile Exporter and cancelling the overwriting of the file.
- Fixed the defect that the application may stop responding when the user scans, selecting the profile where [Color by Length] is enabled, in a scanner which [Color by Length] is not supported.
- Fixed the defect that a horizontally-striped-pattern image may be outputted in black and white.
- Fixed the defect that the scanning profile cannot be switched from the SDK application with the standard user authority.
- Fixed the defect that the driver window cannot display or that scanning is not available with a particular application.
- Fixed the defect that [Automatic Size] in [Cropping] does not become available in some applications that set "ICAP\_AUTOMATICDESKEW" to PaperStream IP.
- Fixed the defect that there may be the difference between the counter number included in the strings that is notified to the application and the counter number printed by the imprinter after performing [Continuous Scan].
- Moved the indicator during scanning from the center of the main display to the center of the application window.
- Fixed the defect that the error message "Processing error occurred with the scanner." is notified if a different data type from the TWAIN agreement is set to "CAP\_XFERCOUNT".

## Service Update 2

### Version 1.7.0.2846

#### Added improvements:

fi-6240Z / fi-6230Z / fi-6140Z / fi-6130Z are supported.

1. The following changes have been made in the user interface of the driver dialog:
  - Added Turkish to the display language in the user interface.

- Revised the design of the icon for switching between normal/simple screen to be more user friendly.
- Revised the expression of the message in the [Preview] window.
- 2. Improved the [Edge Correction] feature to create a more natural result of edge correction for color image.
- 3. Revised [Blank Page Skip] feature to [Blank Page Detection]:
  - Enable to specify whether a blank page is outputted or not.
  - Added the feature to notify the result of [Blank Page Detection] in the application (supported by API) when specifying to output a blank page.
  - Enable to detect a page with a bleed-through as a blank page by judging the outputted image when performing duplex scan.
- 4. Revised the feature to specify [Scanning Area]:
  - Enable to specify the [Scanning Area] even when selecting [Automatic Size] for [Cropping].
  - Added the feature to specify individual [Scanning Area] in the case when each scan setting for multiple images is configured separately; and when [Multi Image Output], [Automatic Color Detection], [Paper Length Detection], and [Use separate settings for front and back side] are ON.
  - Enable to specify the timing of cropping [Scanning Area] in [Configuration]: whether to crop image before or after rotation can be selected by configuring the setting of [Rotation].
- 5. Revised the feature of [Barcode Detection]:
  - Enable to specify [The maximum number of barcodes to be detected per page] to up to 20.
  - Added [Data Matrix] format to Two-dimensional Codes.

**Note:**

Two-dimensional Codes is available when 2D Barcode for PaperStream has been installed.

**Corrected issues:**

1. Fixed the defect that PaperStream IP may stop responding when using Web applications to scan.

2. Fixed the defect in the Software Operation Panel that [None] is set for [Dropout color] even if [White] is specified (It occurs only in fi-6770/fi-6750S/fi-6670).
3. Fixed the defect that the counter value of [Digital Endorser] is initialized when performing continuous scan without displaying the driver dialog.

## Service Update 1

### Version 1.4.0.2613

#### Added improvements:

- fi-5950 / fi-6800 / fi-6770 / fi-6750S / fi-6670 / fi-5530C2 / fi-6110 was added to the supported model.
- Added the function to save the scan settings in the profile when using Assisted Scan. “Save Profile” button is added to the Assisted Scan window.
- Able to specify Scanning Area in long page scanning mode. (except fi-5950, fi-6770, fi-6750S and fi-6670)
- Able to specify Shadow and Highlight when specifying [Black & White] in Image Mode and selecting Custom in Tone Adjustment.
- Able to select JPEG compression type when outputting a TIFF file.
- Support TWAIN standard 2.2.

#### Corrected issues:

- The dialog of Assisted Scan may not display properly when specifying “Use separate settings for front and back side” in Option (except fi-6750S, and fi-65F).
- The settings of Color Cleanup may not be configured from the dialog when outputting in [Color] or [Grayscale] image mode.
- Marking pages may not operate when using the driver in PaperStream Capture and selecting [Mark pages when multifeed is detected] checkbox (except fi-65F).



- In rare cases, launching Software Operation Panel or changing the settings on Software Operation Panel may cause the scanner device to hang up. (fi-5530C2 and fi-6110 Only)
- The settings of Dropout Color may not be applied when outputting in Black & White or Grayscale. (fi-6110 Only)

## **Version 1.1.2.2493 (fi-7280, fi-7260, fi-7180 and fi-7160**

### **Only)**

#### **Corrected issue:**

- Launching Software Operation Panel or setting change on Software Operation Panel may rarely cause a hang-up of the scanner device or destruction of data in EEPROM.

## **Version 1.1.1.2493 (fi-7280, fi-7260, fi-7180 and fi-7160**

### **Only)**

#### **Corrected issues:**

- In rare cases, the program automatically ends when scanning with edge repair function enabled.
- In rare cases, the “ScanSnap Manager for fi Series” automatically ends when scanning.
- In rare cases, the running program stops responding when cancelling a scan.
- When retrying to scan again after paper jam has occurred with the Imprinter installed, an error message, “An unexpected error is received from the scanning device.(DS50005)”, will be displayed and scanning may end suddenly.
- Scanning may end suddenly when retrying to scan again after paper jam.

- When selecting “Stop and Show Image” after multi-feed is detected, an error message of “Not enough memory available” will be displayed, and the scanning may end suddenly.