

## Promotion of Environmental and Social Contribution Activities

We are promoting the sharing of environmental information with our employees to raise environmental awareness, while also engaging in environmental and social contribution activities in the local community. Additionally, under agreements and collaborations with local communities and municipalities surrounding our facilities, we are driving initiatives to preserve biodiversity and beautify the local environment, among other efforts to protect the rich natural ecosystem.

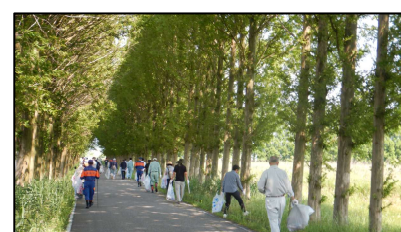
In fiscal 2024, we participated in volunteer activities to remove sediment in Wajima City, which was damaged by heavy rains on the Noto Peninsula, and conducted cleanup activities around our business sites. We also hold events for local residents and engage in community and social contribution activities through the PFU BlueCats ISHIKAWA KAHOKU professional volleyball team.

No.	Event name	Done	Implemented at:
1	Donations for Regional and Environmental Conservation	April, May, September, December 2024	Ishikawa
2	Cleanup activity on the Kahoku Lagoon	June, October 2024	Ishikawa
3	Mass beach cleanup activity sponsored by Kahoku City	July 2024	Ishikawa
4	Volunteer activities in response to the heavy rain disaster in the Noto Peninsula	October to December 2024	Ishikawa
5	Plantation of nandina saplings	December 2024	Ishikawa
6	Community Contribution Activities Through Sports (PFU BlueCats ISHIKAWA KAHOKU)	All year	Ishikawa
7	Use of local ingredients in the company cafeteria	All year	Ishikawa
8	Collection of plastic bottle caps	All year	All the sites in the nation
9	Cleanup activity around business sites	All year	All the sites in the nation

### Cleaning, volunteer activities

#### ■ Volunteer Activities for Kahoku Lagoon Reclaimed Land

In March 2007, we entered into a contract to take part in voluntary activities such as weeding and beautification of the environment to help maintain the beauty of the Kahoku Lagoon Reclaimed Land and the function of its agricultural facilities, as private company No. 1 for the Kahoku Lagoon Reclaimed Land Improvement Area and Kahoku Lagoon Reclaimed Land Periphery Improvement Area. In accordance with this contract, in fiscal 2024, we took part in cleanup activities on the Kahoku Lagoon Reclaimed Land in June and October.



#### ■ Mass Beach Cleanup Activity Sponsored by Kahoku City

In Ishikawa, we participated in the mass beach cleanup sponsored by Kahoku City in July 2024. Together with other participants, we collected a large amount of marine debris—including plastic bottles, styrofoam, and empty cans that had accumulated in the gaps between tetrapods, using a bucket relay method.



### ■ Local Environment Beautification Activities

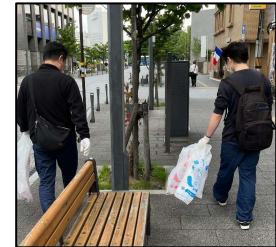
In the Ishikawa area, we cleaned along the commute routes around the headquarters and ProDeS Center in June. This included collecting plastic bottles, empty cans, cigarette butts, and other metal and plastic waste discarded along the commuting routes and around parking areas, contributing to the beautification of the local community.

As part of our CSR activities and environmental activities, we participated in a cleanup activity at Yokohama Minatomirai Grand Mall Park.

At PFU IT Services Limited, we participated in cleanup activities around our business sites located in Miyagi, Kagawa, Fukui, Saga, and Kanagawa Prefectures. We remain committed to actively engaging in local events and contributing to environmental initiatives.



Commute route cleanup  
(Headquarters)



Fukui City downtown  
cleanup (Fukui City)

### ■ Volunteer Activities in Response to the Heavy Rain Disaster in the Noto Peninsula

We participated in volunteer efforts to support recovery from the heavy rain disaster that struck the Noto Peninsula in Ishikawa Prefecture in September 2024. From October to December 2024, a total of 74 employees took part in support activities focused on removing debris and clearing mud from damaged homes in Wajima City.



## Events

### ■ PFU Creation Workshop Camp 2024

On July 27th (Sat) and August 4th (Sun) in 2024, we held PFU Creation Workshop Camp 2024 at the PFU Headquarters. This is an event we have been holding since 2007 for local children in Kahoku City. 2024 marks our 18th workshop camp. In cooperation with the hands-on courses for families held at Kahoku Citizen's College and sponsored by the Kahoku City Board of Education, this event is being offered to families of elementary school students (4th to 6th graders), including families from Kahoku City and families of our company employees.

In fiscal year 2024, we invited 30 parent-child pairs to participate in a two-day program featuring electronic craft activities aligned with the theme of the "Elementary School Programming Contest in Ishikawa."



### ■ PFU Kids Project for the Future - Ishikawa Space School

In 2010, we began collaborating with teachers in Kahoku City, Kahoku County, and Kanazawa City to carry out events working with the themes of space and natural science.

In fiscal year 2024, approximately 300 participants took part in hands-on experiments and craft activities through three annual school-based sessions.



## Donations for Regional and Environmental Conservation

### ■ Green Fund Donation and Plantation of Nandina Saplings

Every year we donate to the "Green Fund", and we plant the saplings we are gifted in return on the grounds of our headquarters. The proceeds from this Green Fund are used for domestic forest maintenance activities such as tree planting and thinning, as well as for supporting disaster-affected individuals, providing forest environmental education for children—the future stewards of our planet—and contributing to overseas greening initiatives.



### ■ PFU Christmas Charity Concert

This concert has been held since 1992. In fiscal 2024, it was held at the "Ishikawa Ongakudo" Concert Hall (Ishikawa Prefectural Music Hall), attracting approximately 1,400 people. All proceeds from this concert were donated through Ishikawa Prefecture as relief funds for the 2024 Noto Peninsula Earthquake and the 2024 Noto Heavy Rain Disaster.



## PFU BlueCats ISHIKAWA KAHOKU's Activities

### ■ Sports Classes and Career Talks at Elementary Schools

PFU BlueCats ISHIKAWA KAHOKU holds sports classes at elementary schools in Kahoku City and other areas of Ishikawa Prefecture as part of comprehensive learning and career education.

In these classes, players and alumni enjoy volleyball with the children and give career talks based on their experiences as athletes, encouraging the children to think about their dreams for the future and expand their horizons.



### ■ "KAHOKU BLUE": Sparkling Wine Project Connecting the Region with the Future

PFU BlueCats ISHIKAWA KAHOKU has developed a sparkling wine called "KAHOKU BLUE" using Takamatsu grapes, a specialty of Kahoku City, as a new challenge in collaboration with the local community. KAHOKU BLUE utilizes grapes that were discarded during the grape thinning process and contributes to the recycling of local resources and the promotion of local specialties and attractions through product development in cooperation with local farmers.

A portion of the proceeds from "KAHOKU BLUE" is donated to support recovery efforts for areas affected by the 2024 Noto Peninsula earthquake and heavy rain disaster.

